



**CHAODA USA**

## Company Overview

Since 1984, Chaoda has been committed to producing high quality valves for industry at a competitive price. Consistency in ownership has kept this strategy on track and maintained a philosophy of ongoing investment in Research and Development as well as manufacturing efficiencies all aimed at staying ahead of the competition. The result is the ultimate blend of high quality valves that you can afford to buy!

12411 Citypark Dr. Ste. 100 Missouri City, TX 77489

# Chaoda Product Portfolio

The Chaoda Group is proud to be able to offer a unique combination in the valve industry, combining:

- › Field-proven designs
- › The latest in manufacturing technology
- › High efficiency manufacturing in a vertically-integrated manufacturing model

## Metal-Seated Ball Valves



### **Metal-Seated Floating Ball Valves**

1/2" through 10"  
ASME Class 150 - 2500  
Flanged, Butt weld Ends  
Design: API 608 & ASME B16.34  
Coatings Available: Chrome Carbide,  
Tungsten Carbide, Nickel Alloy & More



### **Metal-Seated Trunnion Ball Valves**

2" through 48"  
ASME Class 150 - 2500  
Flanged, Butt weld Ends  
Design: API 608 & ASME B16.34  
Coatings Available: Chrome Carbide, Tungsten  
Carbide, Nickel Alloy & More



Chaoda has 25+ years of experience in manufacturing metal-seated ball valves for the most aggressive applications involving high-temperature, erosive and corrosive services. As a result, we have developed in-house capabilities using the latest technologies for overlays, grinding and lapping for the full range of our metal-seated ball valve products.

## Soft-Seated Floating Ball Valves



### **Threaded & Socket weld**

1/4" through 4"  
ASME Class 800  
1,000 psi, 2,000 psi, 6,000 psi WOG  
Unibody, 2 Piece Threaded (Incl. Seal-welded),  
3 Piece Configurations  
FNPT, Socket weld, Butt weld Ends  
Design: API 608 (Class 800) & ASME B16.34



### **2 Piece Body**

1/2" through 10"  
ASME Class 150 - 1500  
Flanged & Butt weld Ends  
Design: API 608 & ASME B16.34



### **Unibody**

1/2" through 6"  
ASME Class 150 - 300  
Flanged Ends  
Design: API 608 & ASME B16.34

## Soft-Seated Trunnion Ball Valves



### **2 Piece Body**

2" through 48"  
ASME Class 150 - 1500  
Flanged & Butt weld Ends  
Design: API 6D (Midstream) or API 608 & ASME B16.34



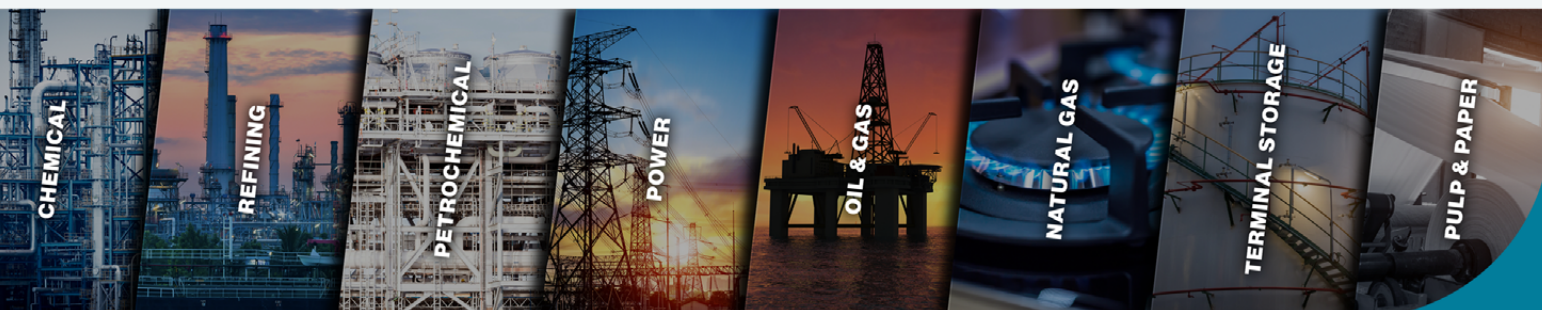
### **3 Piece Body**

2" through 36"  
ASME Class 150 - 2500  
Flanged & Butt weld Ends  
Design: API 6D (Midstream) or API 608 & ASME B16.34

## Available Materials

Carbon Steels	Low Alloy Steels	Austenitic Stainless Steels
Duplex Stainless Steels		High Nickel Alloy Steels

## INDUSTRIES WE SERVE



## Pig Valve



### **EZ-Loader Pig Valve**

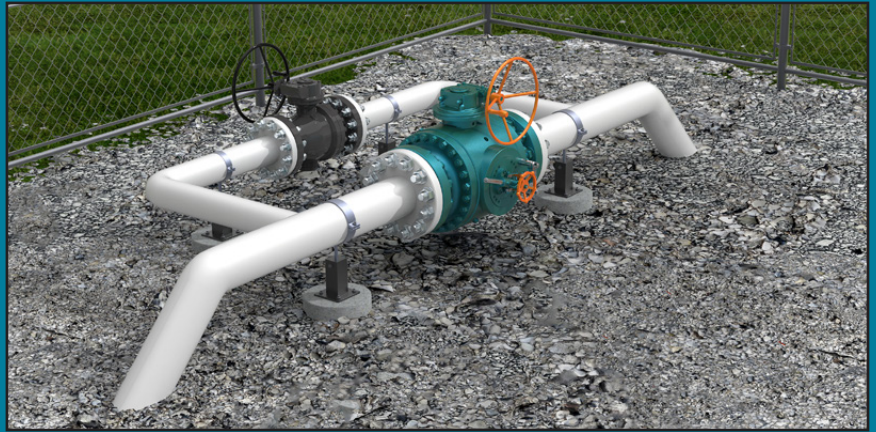
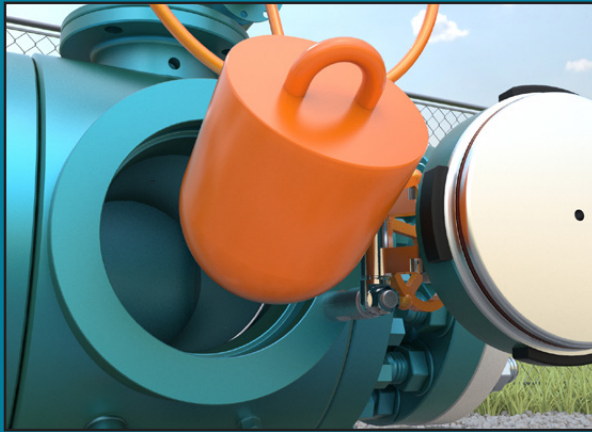
3" through 20"

ASME Class 150 - 1500

Flanged & Butt weld Ends

Design: API 6D

A completely revolutionary valve that improves the accessibility to the central components for easy maintenance and repair. Our pig valve comes with several customization options to fit your needs. No scaffolding required, as the hatch provides quick access to the torso for no hassle loading without the worry of crushed fingers. This system requires full cavity pressure relief before the latch can be freed while avoiding traditional threaded cap technology that can be difficult to handle and rusted under field conditions



## Gate, Globe, & Check Valves



### **Cast Steel Bolted Bonnet Gate, Globe & Swing Checks**

2" through 72"

ASME Class 150 - 900

Flanged & Butt weld Ends

Design: API 600 & API 603 (Gate),

API 623 (Globe), API 594 (Swing Check)

& ASME B16.34



### **Dual Plate Check Valves**

1.5" through 84"

ASME Class 150 - 2500

Wafer, Lug, Double Flanged Ends

Design: API 594 & ASME B16.34



### **Forged Steel Gate, Globe & Swing Checks**

1/4" through 2"

ASME Class 150 - 1500

Flanged, FNPT, Socket weld, Butt weld Ends

Design: API 602 & ASME B16.34

## Cryogenic Valves



### **Floating & Trunnion Ball Valves**

#### **Gate & Globe Valves**

Chaoda has a complete product line of cryogenic designs, including gate and globe valves as well as floating and trunnion ball valves. Chaoda also has full capability to perform cryogenic testing in house to customer specifications.

**CHAODA CERTIFICATIONS**



**LOW**  
**Compliant**

Low Fugitive Emissions  
Performance - Guaranteed



[www.chaodausa.com](http://www.chaodausa.com)



[/company/chaodausa/](https://www.linkedin.com/company/chaodausa/)



832-939-9944

# Chaoda Manufacturing Facilities Profile

We are a fully integrated manufacturer owning all of the processes required to produce our valves. From the design, to the foundry, to the machining and processing, to the assembly and test, we own it and control it. This streamlined, tightly controlled system generates highly consistent product tailored to your needs at a cost that won't break the budget.



## BALL VALVE PLANT & CHAODA GROUP HQ - WUXING

**Facility Scope:** Machining, Assembly/Test of Floating & Trunnion Ball Valves, Soft-Seated & Metal-Seated Valve Design, Engineering, Quality Support, and Sales  
**Production Capacity:** 14,000 valves per month  
**Facility Size:** 344,445 sq-ft  
**Number of Employees:** 260  
**CNC Machining Centers:** 69  
**Heat Treatment Furnace Capacity:** 250 Tons per month  
**On-Site NDE:** MT, PT

## GATE, GLOBE & CHECK VALVE PLANT - LISHUI

**Facility Scope:** Machining, Assembly & Test of Gate, Globe & Check Valves  
**Production Capacity:** 15,000 valves per month  
**Facility Size:** 861,112 sq-ft  
**Number of Employees:** 270  
**On-Site NDE:** MT, PT



## CASTING FOUNDRY - QINGTIAN

**Facility Scope:** Production of Investment & Resin Sand Castings  
**Production Capacity:** 1,000 Tons per month  
**Facility Size:** 495,140 sq-ft  
**Number of Employees:** 302  
**Heat Treatment Furnace Capacity:** 1,200 Tons per month  
**VOD Furnace Capacity:** 80 Tons per Month  
**On-Site NDE:** RT, MT, PT, UT

Chaoda's owned foundry is recently-built (2015) and state-of-the-art, equipped with the latest technology including bottom-pouring ladles and vacuum oxygen decarburization (VOD) equipment to allow us to produce superior quality in a wide variety of metallurgies.

## CLOSED DIE FORGING FOUNDRY - FUJIAN

**Facility Scope:** Production of Closed Die Forgings  
**Production Capacity:** 150 Tons per month  
**Facility Size:** 69,965 sq-ft  
**Number of Employees:** 50



## CHAODA USA HQ - MISSOURI CITY, TX USA

**Facility Scope:** Distribution, Engineering, Quality Support, and Sales  
**Facility Size:** 30,000 sq-ft  
**Number of Employees:** 20

Chaoda's Western Hemisphere headquarters is located in Texas to serve the specific needs of our valued end users with inventory, technical support and a range of value-added services.